



LACE FRAME AND DOILY TUTORIAL

SUPPLIES:

- Super BladePro plugin
- BladePro preset: "GV_Pleated Cotton"
- Bitmap: "dtex0014.bmp"
- "Scalloped Circle Mask.png"
- "Floral Background.jpg"
- "Mesh.png" file of your choice
- Decorative element(s) of your choice

NOTE: Before you start the tutorial, make sure that you have Super BladePro installed and the preset and bitmap files in their proper locations.

1. Open "Scalloped Circle Mask.png".
2. Go to Layers > New Mask Layer > From Image. Check "Source Luminance" and "Invert mask data". You won't need to change the Source Window setting.



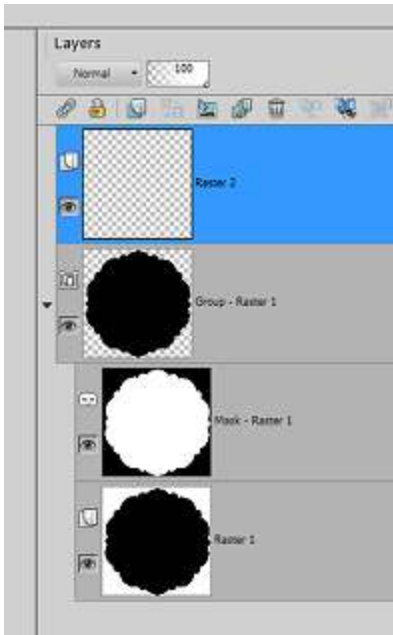
3. Go to Selections > From Mask.

4. Go to Selections > Modify > Select Selection Borders. Settings:

- Inside
- 6 pixels
- Anti-Alias: checked



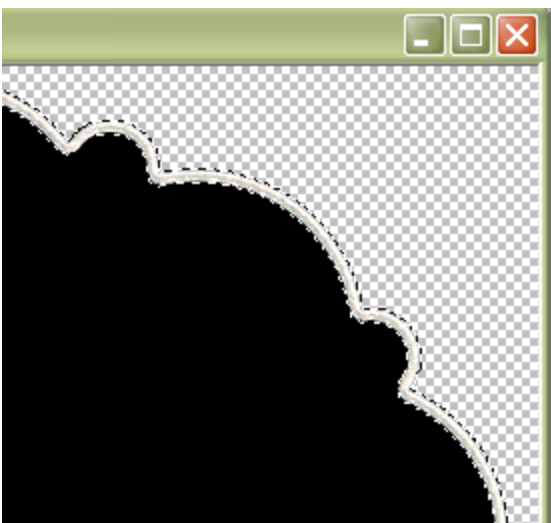
5. Create a new Raster layer above the "Group - Raster 1" mask layer.



6. With the new layer active, Flood Fill the selection with white.



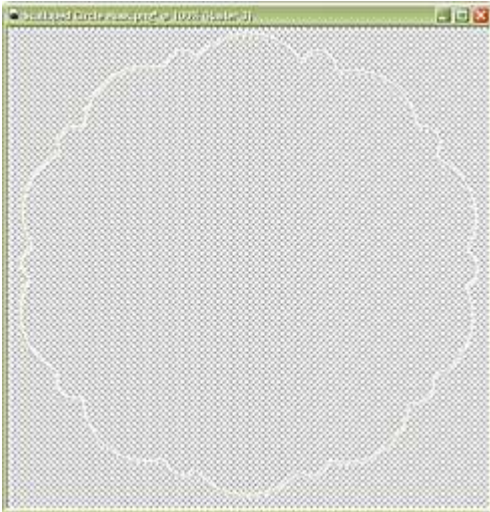
Go to Effects > Plugins > Flaming Pear > SuperBladePro. Apply the BladePro preset "GV_Pleated Cotton" to the border.



Selections > Select None.

7. Create a new Raster layer above the "Group - Raster 1" mask layer but under the white border layer you just created.

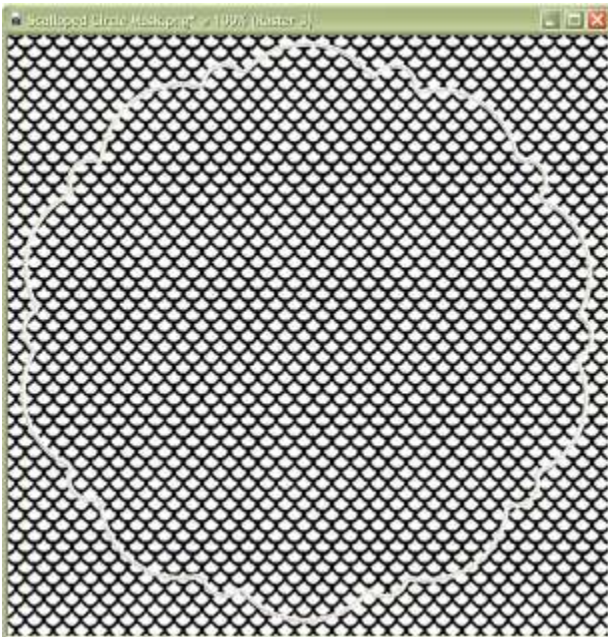
Hide the mask layer by clicking the "eye" to the left of the "Group - Raster 1" layer.



8. Open the mesh pattern image of your choice. I used "Mesh6.png" for the example above.

Set the Foreground color swatch to Pattern and choose your mesh image from the Current Pattern drop-down list. Set the Angle to "0" and the Scale to "100".

Flood Fill the new layer with the mesh.



9. Make the mesh layer (Raster 3) active.

Go to Layers > New Mask Layer > From Image. Check "Source Luminance" and "Invert mask data".

Click the "Raster-3" layer to make it active and Flood Fill it with white. Reset your Foreground swatch to Color first, if you haven't already done so.



Go to Layers > Merge > Merge Group to merge the mask group into a single layer.

10. Click on the layer "Mask-Raster1", which is the scalloped shape mask layer, then go to Selections > From Mask.

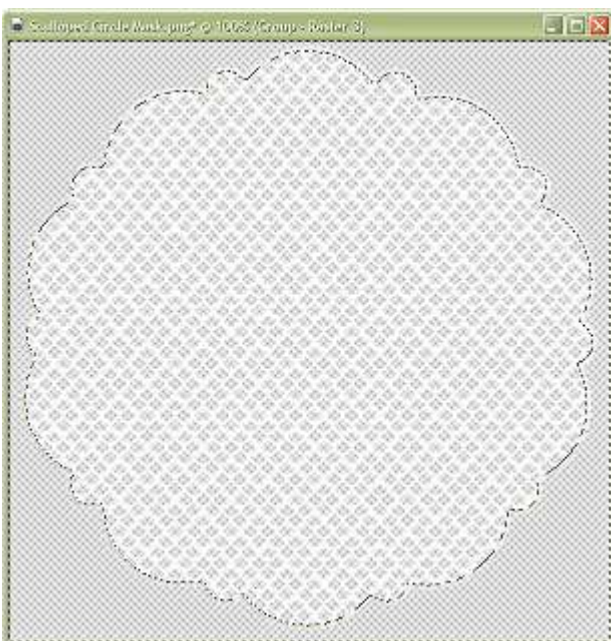
Go to Selections > Modify > Contract.

Contract the selection by 4 pixels.

Go to Selections > Invert.

11. Click on the "Group-Raster 3" layer to make it active. Press the Delete key. Select none.

12. Delete the "Group-Raster 1" mask layer by right-clicking on it and choosing "Delete".

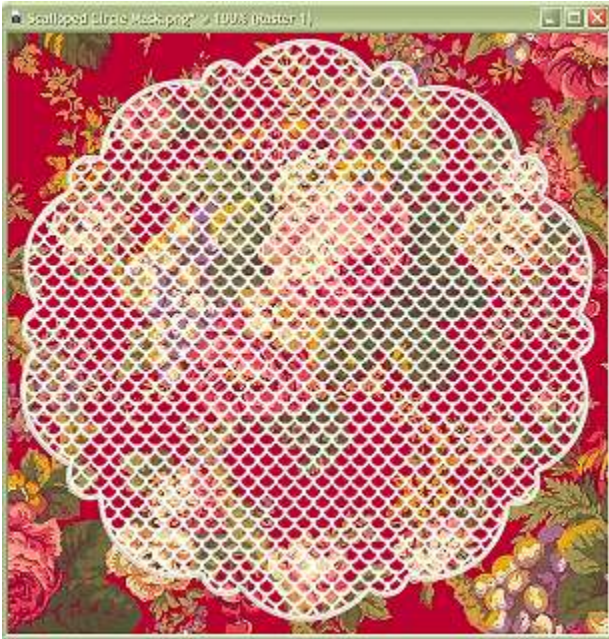


13. Create a new Raster layer.

Drag it down so that it is the bottom layer.

Open the image "Floral Background.jpg" and set it as the Current Pattern in the Materials palette. Keep the Angle and Scale settings as they are.

Flood Fill the layer with the floral pattern.



14. Click on the "Raster 2" white border layer to make it active.

Go to Effects > 3D Effects > Drop Shadow:

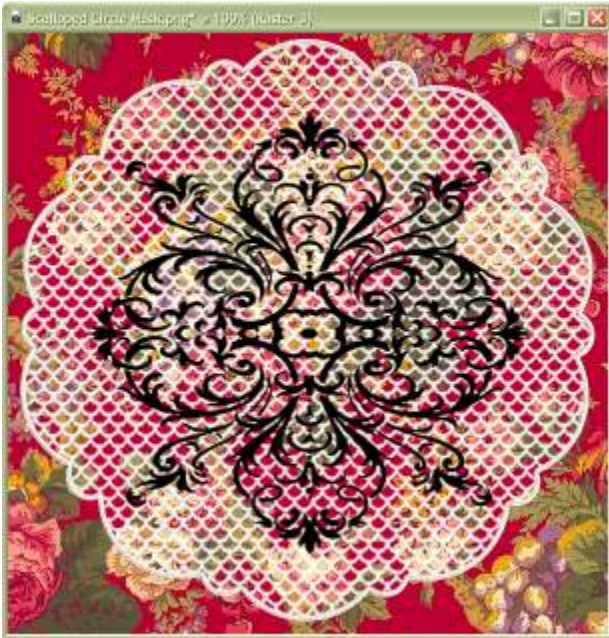
- Offsets: set both to 1
- Opacity: 15
- Blur: 2
- Color: Black
- Shadow on new layer: checked

The drop shadow will be very subtle.



15. Open "Decoration1.png". Copy the image to the clipboard (Edit > Copy).

Go to Edit > Paste > Paste as New Layer on the doily image.



Drag it so that it is the top layer.

16. Lock the layer transparency of the new "Raster 3" (decoration) layer by clicking the "Lock Transparency" ("Lock/Unlock" in later versions of PSP) padlock icon in the Layers palette.



Flood Fill the decoration layer with white.



NOTE: In later versions of PSP, I have to use these settings for the Flood Fill tool:

- Match Mode: RGB Value
- Tolerance: 200
- Blend Mode: Normal
- Opacity: 100

Go to Selections > Select All.

Go to Selections > Float then to Selections > Defloat.

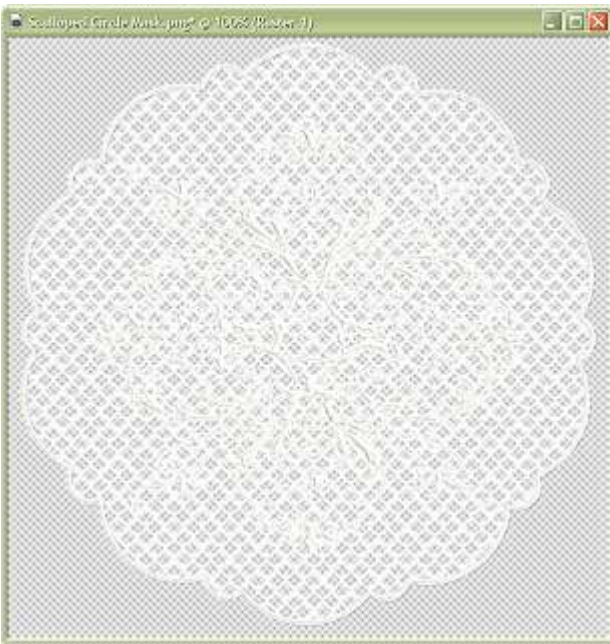


Apply the same BladePro preset to the decoration that you applied to the doily.



Select none.

17. Hide the floral "Raster 1" background layer by clicking the "eye".

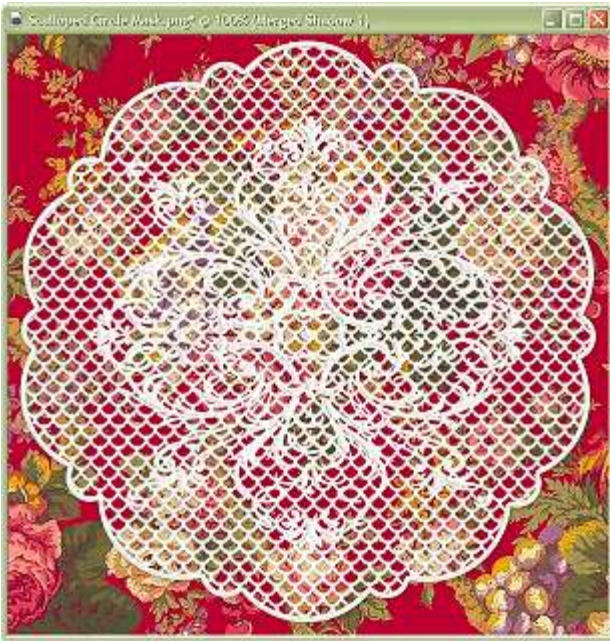


Go to Layers > Merge > Merge Visible.

Unhide the background layer.

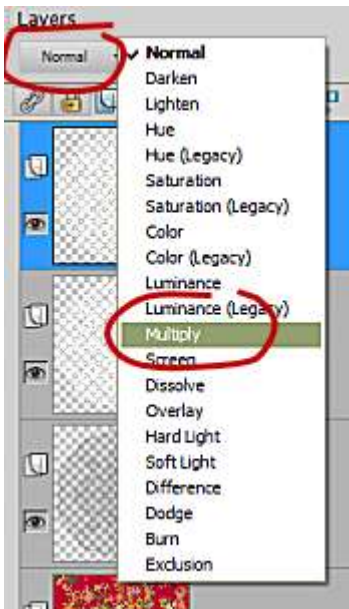
18. Apply a Drop Shadow to the doily "Merged" layer by going to Effects > 3D Effects > Drop Shadow:

- Offsets: set both to 1
- Opacity: 30
- Blur: 10
- Color: Black
- Shadow on new layer: checked



19. To change the color of the doily, Duplicate the doily layer (Layers > Duplicate).

Lock the transparency of the duplicate doily layer and set the Blend Mode to "Multiply".



Flood fill with the color of your choice. I used R:242 G:234 B:188 which is an ivory color.

Merge the two doily layers.



NOTE: The lace frame was made using the same technique but with more decorations added and with a cut-out in the center for inserting a photo. I've included the images needed to create the frame in the ZIP file along with several different lace mesh images. You will need to resize them as necessary to fit your project.

TIP: To simplify this tutorial a bit, I left out an optional step. In Step 8, when you add the mesh layer, you can select it and apply the same BladePro preset to give it a little bit of texture. With very fine mesh, this probably wouldn't be noticeable so I didn't bother including this step.